



IOL
YONGIN
2019

The 17th International Linguistics Olympiad, Yongin, Korea

Team Leader's Handbook

제17회 국제 언어학 올림피아드 인솔자를 위한 지침서

Photo by Bundo Kim



WELCOME TO KOREA

Welcome, Team Leaders! It is a pleasure to be working with you at this year's IOL. We haven't got much time before the event, so I hope you are ready and excited. We hope this handbook comes in handy (pun intended) and let us know if you need anything before or during the IOL.

This year, we expect to have 54 teams from 36 countries, with a total of over 350 people, including 30 volunteers and 20 jury members. We are thrilled to host the biggest IOL in history, and we are grateful for this meaningful opportunity. We are looking forward to meeting all the young, brilliant minds and the local organizers and volunteers promise to ensure a positive experience to everyone joining us.

See you soon in Korea!

— Minkyu Kim
Co-chair of Local Organizing Committee of
the 17th International Linguistics Olympiad

Contents

Welcome Message	2
Fact Sheet	4
Infographic on Korea	5
Some more facts on Korea	6
Weather	7
Venue	8
Airport Pick-ups	9
Airport to Venue	10
Venue to Airport	13
Facilities	14
Amenities	15
Health	16
Travel Sites	17
Check-List	19
Notice on the use of flags during the ceremony	20
Warnings	21
Emergency Contacts	22



FACT SHEET

Official Name	Republic of Korea	대한민국
Common Name	(South) Korea	한국
Location	Korean Peninsula, East Asia	한반도
Official Languages	Korean (Koreanic or Isolate) Korean Sign Language	한국어 한국수어
Script	Hangul	한글
Currency	KRW (Korean Republic Won, ₩)	원(₩)
Time Zone	UTC+9:00	
Calling Code	+82	
Top-level Domain	.kr	
Global Peace Index	#55 (2019)	
Features	fastest Internet in the world, K-pop/dramas, Taekwondo, ...	

Infographic on Korea



PEOPLE



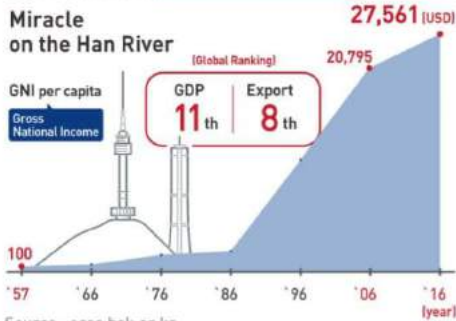
SYMBOL



HISTORY



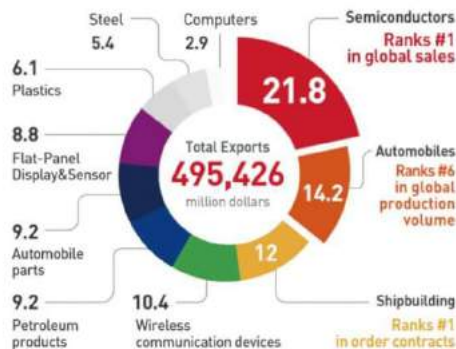
ECONOMY



EXPORTS

Korea's Top 10 Exports

[Total Amount of Top 10 Exports : \$ 285,410 million, %]



DEMOCRACY

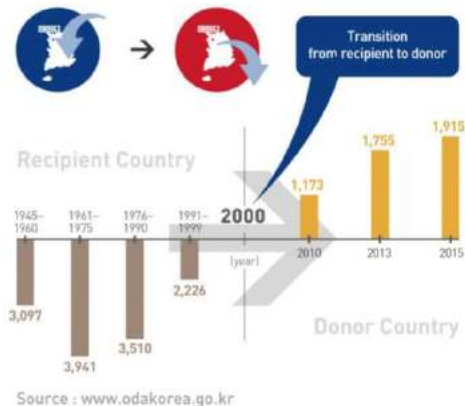


CULTURE



INTERNATIONAL CONTRIBUTION

Total ODA Amount [net expenditure, USD million]



Some more facts on Korea

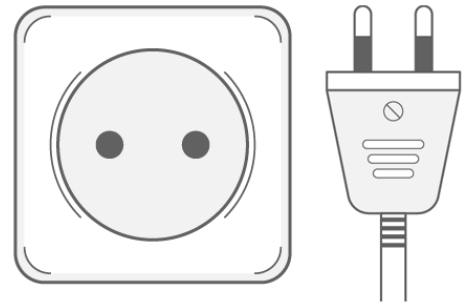


Working Days
=
Monday-Friday



First Floor (1F)
=
Ground Floor

Power Plug
220 V, 60 Hz, Type C



Unless you are coming from Europe (excluding UK, Ireland, Cyprus or Malta) to Korea, you will need a simple adapter to plug in your electronics



Tap Water
=
Drinkable

NO Tipping!



Legal drinking age:
20 in the Korean age system



Those born on December 31st, 2000 or earlier can buy alcoholic beverage this year.



Weather

날씨

Korean summer is **hot** and **humid**. Since the IOL is during the monsoon season (*Jangma* in Korean), we will be expecting some rain. Don't forget to bring an umbrella or a raincoat. Make sure you keep your teammates **hydrated**. Water fountains can be found throughout the campus.

Here is a weather forecast of the IOL week (as of July 12, 2019):

SUN 7/28



28° /23°

Cloudy, a shower in the p.m.

Hist. Avg.
31°/23°

MON 7/29



28° /23°

Cloudy, afternoon t-storms

Hist. Avg.
31°/23°

TUE 7/30



28° /23°

A shower and t-storm around

Hist. Avg.
31°/23°

WED 7/31



28° /23°

A shower and t-storm around

Hist. Avg.
31°/23°

THU 8/1



29° /23°

Times of clouds and sun

Hist. Avg.
31°/23°

FRI 8/2



30° /23°

A shower and t-storm around

Hist. Avg.
31°/23°

SAT 8/3



28° /23°

A couple of morning showers

Hist. Avg.
31°/23°



Hankuk University of Foreign Studies (HUFS)

Hankuk University of Foreign Studies (HUFS) was founded in 1954 to produce talented individuals who could further Korea's modernization and the cause of world peace. Based on genuine understanding and profound love for the Korean people and humankind, HUFS' enterprising spirit has helped Korea establish a major presence in the world, overcoming national adversity from the Korean War. HUFS will continue to work for peace for all humankind through its ongoing search for the truth and create a new culture. This will primarily entail concentrating all its resources on fostering talented people for Korea in the world and for the world in Korea.

HUFS Global Campus

The Global Campus (Yongin) offers a striking contrast to the urban atmosphere of the Seoul Campus. Isolated from the hustle and bustle of the city life, the Global Campus is nestled in beautiful Wangsan valley filled with wild flowers and covered with rich foliage. Whereas the Seoul Campus has virtually no more space for new construction, the 2.6 million square meters of the Yongin Campus still has many open sites for future development. At the center of the campus one finds the Myoungsoodang Pond, which lives fully up to its name that means the "pond with clear water." Students can choose to stay in the on-campus dormitory and use numerous on-campus facilities, or they can easily commute via commercial bus lines from Seoul.



한국외국어대학교
HANKUK UNIVERSITY OF FOREIGN STUDIES

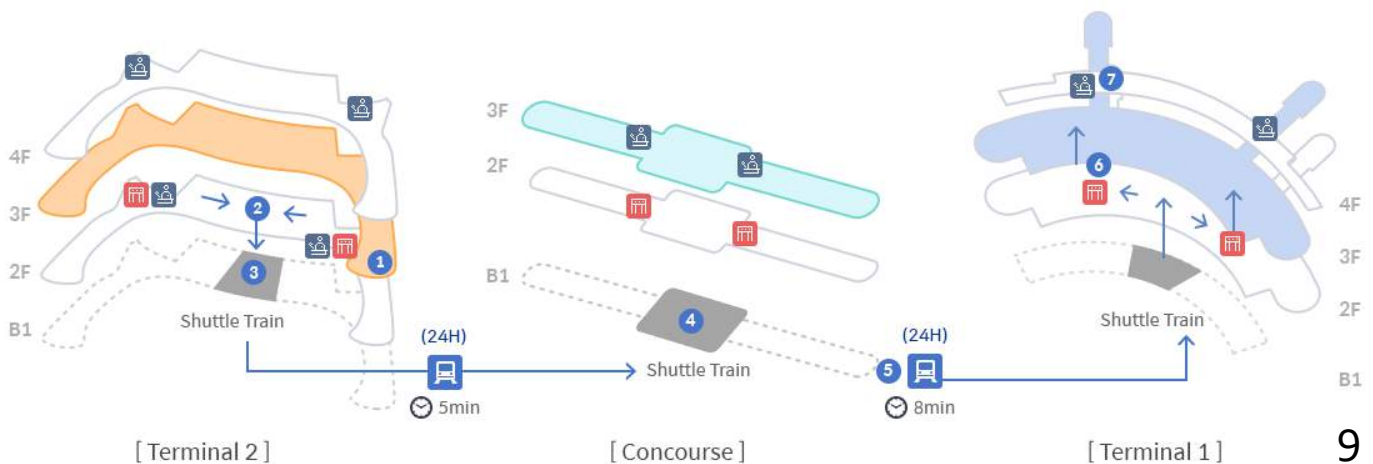


A designated volunteer for each team will be waiting for you at the airport.

Make sure you contact your volunteer in advance to agree on a precise location & time to meet.

Incheon airport has two terminals: Terminal 1 & Terminal 2.
Please be aware of your landing terminal.

➡ To Terminal 1 Transfer 🚪 Transfer Security Check 🧑 Transfer Desk





Airport → Venue SELF-ARRIVAL

If you're traveling by public transportation, we strongly advise you to buy a T-money card. More info [here](#)

1. Take the AREX train from the airport (Incheon or Gimpo) to Seoul Station

Incheon(T1)-Seoul, express: 9,000 KRW
 Incheon(T1)-Seoul, normal: 4,150 KRW
 Gimpo-Seoul: 1,450 KRW
 Card Deposit Fee: 500 KRW



Incheon Airport
AREX station

“서울역 직통 1장 주세요”
 “One express ticket for
 Seoul Station, please”



2. Take the **red** bus #1150 at Seoul Station (**Bus platform #5**)

Be careful! Seoul Station is very crowded and full of different buses.



It takes approx. 1 hour and 30 minutes to the campus.

“용인 가는 1150번 버스는 어디에 있나요?”

“Where is the bus #1150 to Yongin?”

3. Get off at the stop number 47-o61 (외대기숙사, HUFS dormitory).

“외대기숙사 정거장에서 내릴게요.”

“I would like to stop at HUFS Dormitory”



We will be using
Dorm A and B during
the IOL.

G is Gaon Plaza
where the cafeteria is
located.



Venue → Airport

SELF-DEPARTURE

1. Take the same red bus #1150 at the stop number 47-060 (외대기숙사, HUFS dormitory).
✓ **This stop is across the street from the dormitory.**
2. Drop off at Seoul Station.
3. Take the AREX train to the airport (Incheon or Gimpo)

For departure, we will provide a bus to

- Incheon Airport
- City Airport (Gangnam – South of Seoul)
- Seoul Station (Gangbuk – North of Seoul)

City Airport is located here: <https://goo.gl/maps/Xfo1aUPnpFNgQWNB9>

- You can ride a direct bus to Incheon or Gimpo Airport.
- You can check-in your luggage if you're flying one of 16 designated airlines (see <https://www.calt.co.kr/lang/en/chkin/chkin2.php>)
- It has many luggage lockers as well as luggage keeping service.
- It is close to COEX, Bongeunsa, and Gangnam street.

Seoul Station is located here: <https://goo.gl/maps/6WmsBGe4SfwGKQC76>

- You can take the AREX train to Incheon or Gimpo Airport.
- You can check-in your luggage if you're flying one of 6 designated airlines (KE, OZ, TW, ZE, LJ; 7C flights to USA)
- It has many luggage lockers.
- It is located right in the downtown of Seoul, close to Seoulo 7017 (great walking place with many artworks), Namdaemun Gate, Deoksugung Palace, and Seoul N Tower, and Namsan Park.



Facilities

시설

Here is a list of facilities available in the dormitory.



- Gym
- Basketball field
- Ping-pong tables (until 4pm every day)
- Billiard Room
- Washing machines
- Convenience Store (11am-8pm every day)
- Study room
- Lounge and vending machines

Free WiFi is served throughout the whole campus.
Connect to 'HUFS Global' anywhere.





Amenities

구비 물품

Example of your room

Your room is equipped with...

- Desks and chairs
- Bookshelves
- Closets
- Linens
- Pillows
- Desk lamps
- Bar soaps
- Towels
- A telephone
- A refrigerator
- A free WiFi connector
- A laundry drying rack
- A fire extinguisher
- Water fountain (every floor)



Your room is **not** equipped with...

- Toothbrush and toothpaste
- Shampoo and body wash
- Hair dryer
- Power strip



Please pay closer attention to your teammates' well-being and let the organizers know of any precautions that must be taken in advance. Contact any of our volunteers for medical emergencies.

Are you visiting or passing through any of the following countries before the IOL? Your voluntary cooperation with quarantine is appreciated.



Quarantinable Disease Risk Areas Jan. 1, 2019

Quarantinable Disease (Monitoring Period)

- Cholera(5days)
- Avian Influenza(10days)
- Plague(6days)
- Poliomyelitis(21days)
- Yellow Fever(6days)
- MERS(14days)

When you visit (stay or pass through) "Quarantinable Disease Risk Areas" during monitoring period, you must submit "Health Questionnaire" to a quarantine officer as you entering. Otherwise, you may be charged up to KRW 10 million in fines under the Article 41 of the Quarantine Act.

Africa (37 countries)					
Algeria	C	Angola	Y, C	Benin	Y
Burundi	Y	Cameroon	Y, C	Burkina Faso	Y
Democratic Republic of the Congo	Y, C, P	Equatorial Guinea	Y	Chad	Y
Ghana	Y	Guinea	Y	Gabon	Y
Liberia	Y	Madagascar	C	Kenya	Y, C, P
Mauritania	Y	Mozambique	Y, C	Malawi	Y
Republic of Côte d'Ivoire	Y	Republic of South Sudan	Y, C	Mali	Y
Senegal	Y	Sierra Leone	Y	Niger	Y, C, P
Tanzania	C	Togo	Y	Republic of the Congo	Y, C
Zimbabwe	C			Somalia	C, P
				Sudan	Y
				Uganda	Y, C
				Zambia	C

Asia · Middle East · Oceania (17 countries)			
Afghanistan	P	Bahrain*	M
China** (6 Provinces)	A	India	C
Iran*	M	Jordan*	M
Kuwait	M	Lebanon*	M
Oman	M	Pakistan	P
Papua New Guinea	P	Philippines	C
Qatar*	M	Saudi Arabia	M
Syria	P	United Arab Emirates	M
Yemen*	M C		

America (13 countries)	
Argentina	Y
Bolivia	Y
Brazil	Y
Colombia	Y
French Guiana	Y
Guyana	Y
Paraguay	Y
Peru	Y
Republic of Suriname	Y
Trinidad and Tobago	Y

* Adjacent to MERS-affected area

** China (9 Provinces) : Anhui, Beijing, Fujian, Guangdong, Guangxi Zhuangzu, Hunan, Jiangsu, Xinjiang Uygur, Yunnan



Quarantinable Disease Risk Areas



Travelsites

여행지

1. Everland (amusement park) / Caribbean Bay (waterpark)
 - Taxi: 20 min, 10,000 Won / Bus: 30 min, 2,400 Won (T-money)
 - Opening Hours: 10am-9pm (Sun-Thu), 10am-10pm (Fri, Sat)
 - Price: see website
 - <http://www.everland.com/web/multi/english/everland/main.html>



2. Korea Folk Village, Yongin
 - Taxi: 40 min, 25,000 Won / Bus: 1 hr 30 min, 2,400 Won (T-money)
 - Opening Hours: 9:30am-5pm (Mon-Fri), 9:30am-6pm (Sat, Sun)
 - Price: 20,000 Won / <http://www.koreanfolk.co.kr/multi/english/>



3. Hwaseong Haenggung Palace, Suwon (**Summer Night Open!**)
- Taxi: 45 min, 28,000 Won / Bus: 1 hr 30 min, 2,400 Won (T-money)
 - Opening Hours: 9am-9pm
 - Price: 1,000 Won / <http://www.swcf.or.kr/english/>



4. Lotte World Tower (observatory, shopping mall, amusement park)
- Taxi: 45 min, 35,000 Won / Bus: 1 hr 40 min, 2,500 Won (T-money)
 - Opening Hours: 10am-10pm (Sun-Thu), 10am-11pm (Fri, Sat)
 - Price: see website / <https://www.lwt.co.kr/tower/en/main/main.do>



5. Gangnam/COEX/Bongeunsa, Seoul
- Taxi: 45 min, 35,000 Won / Bus: 1 hr 40 min, 2,600 Won (T-money)
 - Opening Hours: see website
 - <https://www.coexcenter.com> / <http://www.bongeunsa.org>





Check-List 체크리스트

MUST CHECK

Do all your teammates have a valid visa or visa waiver to enter Korea?

Have all your teammates purchased their flight tickets to Korea?

Have you reported the arrival and departure plans of your teammates to us?

Have you contacted your designated volunteers to agree on a meet-up plan

Mandatory packing

Passport and travel documents (visa, flight itinerary, and/or invitation letter)

Communication devices (smartphones or tablets)

Enough clothes for a week (you will be sweating a lot!)

Toiletries (e.g. shampoo, body wash, toothpaste, toothbrush, extra towels ...)

Writing tools for the contest (e.g. pens, pencils, erasers, ...)

Umbrella and/or raincoat; sunscreen

Personal prescription medication

Good to bring

Team t-shirts and national flags (team flags)

Souvenirs/gifts for new friends

Cash (to buy street foods or souvenirs during the excursion)

Detergent (if you are planning to do your laundry at the dormitory)

Power adaptor(s) and/or a power strip



Notice on the use of flags during the ceremony

- Contestants are encouraged to hold and wave their national flags or team flags on the stage during the awards ceremony.
- However, contestants should be instructed to:
 - **respect** other contestants from different countries;
 - **stand together** stand together and share one flag with contestants from the same country; and
 - **not hold** a flag that is wider than the width of the person(s) that are holding the flag (maximum **90 cm** for one person)

OK →



Not OK →





Warnings

- **Drinking and smoking is prohibited in the dormitory.**
- Narcotics and firearms: strictly forbidden by law
- Although the security is normally good throughout Korea, it is recommended not to go out of the venue or roam around the campus after dark.
- You may find it hard to communicate with locals in English. Please ask Korean-speaking volunteers to escort you when going out.
- Do not let contestants act separately from the rest of your team without the team leader's consent.
- There will be other people staying at the campus for some programs. Please respect their rights and share the facilities.



Emergency contact

Local Organizers:

Minkyu Kim	+82 10 8984 9831
Yoojung Chae	+82 10 4588 1673

Police	112
Fire & Ambulance	119